



BLUE RIBBON CORP.

Pressure, Temperature, & Electronics





PRESSURE GAUGES



	BR411	BR301 / BR302	BR251	BR201 / BR202
Dial	4.5"	1.5", 2", 2.5", 4", 4.5", 6"	1.5", 2", 2.5", 4", 4.5", 6"	1.5", 2", 2.5" 4", 4.5", 6"
Connection	1/4", 1/2" NPT	1/8", 1/4", 1/2" NPT	1/8", 1/4", 1/2" NPT	1/8", 1/4", 1/2" NPT
Internals	BRASS, 316 SS	316 SS	316 SS	BRASS
Ranges	30" VAC to 20,000 PSI	30" VAC to 20,000 PSI	30" VAC to 20,000 PSI	30" VAC to 10,000 PSI



	BR601	BR651	BR101 / BR102	BR501
Dial	4.5"	4.5"	1.5", 2", 2.5", 4"	2.5", 4", 5"
Connection	1/4" NPT	1/4" NPT	1/8", 1/4", 1/2" NPT	1/4" & 1/2" NPT
Internals	BRASS	BRASS	BRASS	BRASS
Ranges	VAC to 1,000 PSI	VAC to 1,000 PSI	30" VAC to 5,000 PSI	Vacuum to 10 PSI



	DIFFERENTIAL	BR801 / BR802	BR901 / BR902	SANITARY	MUD GAUGE
Dial	2.5" & 4"	2.5", 4"	2.5", 4"	2.5", 4"	4"
Connection	1/4" & 1/2" NPT	1/4" & 1/2" NPT	1/4" & 1/2" NPT	1.5" & 2" Tri-Clamp	2" NPT
Internals	316 SS	316 SS	BRASS	316 SS	316 SS
Ranges	VAC - 150 PSI	30"-0-150 PSI/F 30"-0-300 PSI/F	30" VAC to 15,000 PSI	30" VAC to 600 PSI	5K PSI to 15K PSI



TEMPERATURE



BR9

9" Aluminum Case
Adjustable Angle

1.25 NEF

Organic Spirit Fill

-40 - 300 °F/C



BI-METAL THERMOMETERS
BR3/BR3A / BR5/BR5A

3", 5"

1/2" NPT

304 Case, 316 SS Internal

-40 - 1000 °F/C



BR3AT/BR5AT

3", 5"

1/2" NPT

304 Case, 316 SS Internal

-40 - 1000 °F/C



THERMOWELLS - INDUSTRIAL

Brass, 304 SS

3/4" NPT

Lagging Available

Stem Lengths 3.5" / 6"



THERMOWELLS - BI-METAL

Brass, 304 SS, 316 SS
Other Upon Request

1/4", 1/2"

Lagging Available

2.5" - 72"



TRIDICATORS

2.5", 3"

1/4", 1/2" NPT

BRASS

To 200 PSI - To 300 °F/C



BRGT

2"

3/4" FPT

BRASS

0-15 to 100 PSI
(with 1/10# increments - only for 0-15)



5" HOT WATER

Straight BR5HW-S
Angle BR5HW-A

1/2" NPT

Valox Case /
Seperable Brass Well Included

-40 - 110 °F/C | 30-240 °F/C



2.5" HOT WATER

BRHW
BRHW-SW

1/2" NPT • 3/4" Solder

Aluminum Case /
Brass Stem w/Well

30-2500 °F/C



CLAMP-On THERMOMETER

2.5" Aluminum Dial

Spring Tension

BRASS

30-250 °F/C



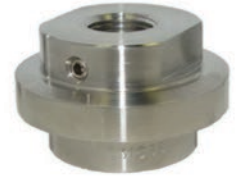
BRWT

2"

Hose Bib

BRASS

0-15 to 0-300 PSI



Model	BR-D Series 1000	M45 Series 4000	Model M35 Series 5000	Model LP Series 6000
	Bolted Design	One Piece Design	One Piece Design	One Piece Design
Connection	1/4"-1" Process 1/4", 1/2" Instrument	1/4" Process 1/4" Instrument	1/4", 1/2" Process 1/4", 1/2" Instrument	1/4", 1/2" Process 1/4", 1/2" Instrument
Diaphragm Material	Standard SS Others Available	Stainless Steel	Stainless Steel	Stainless Steel
Ranges	30" VAC - 2500 PSI	1000 - 2500 PSI	30 - 000 PSI	0 - 2500 PSI



Model	Flanged Seal Series 7000	ISO-Ring	BRGD SAI-2	BRPV Seal Series 3000
	1", 1 1/2", 2" Standard 150# RF, 300# RF	Stainless Steel Other Available	2 1/2" Gauge w/PVC Seal	PVC Construction
Connection	Welded Flanged Diaphragm Seal	Wafer Style	1/4", 1/2" FNPT	1/4"
Diaphragm Material	Stainless Steel Viton, Buna	Buna, Viton	PTFE / Viton	Teflon
Ranges	30" VAC - 2500 PSI	VAC - 1000 PSI	15 - 400 PSI	30" VAC - 200 PSI

ACCESSORIES



BD300 - Pump Controller

Features

- Multi-Pump Alternation Control
- 0-20 mA, 4-20 mA, 0-5 V, 1-5 V, and ± 10V Inputs
- NEMA 4X, IP65 Front
- Programmable Display & Function Keys
- Standard 1/8 DIN (445 mm x 92 mm)
- Modbus® RTU Communication Protocol Standard

Options

- 4 Relays + Isolated 4-20mA Output
- External 4-Relay & Digital I/O Expansion Modules
- USB, RS-232, RS-485 Serial Communication





TRANSMITTERS

					
	BIRDCAGE	BR313L	BR313F	BR313G	BR1103
Features/Applications	<ul style="list-style-type: none"> • 3" diameter diaphragm resists clogging • Protective baffle plate • Ship in 1-3 days • Lightning surge protection • Corrosion resistant SST • Designed for lift station level monitoring 	<ul style="list-style-type: none"> • Up to $\pm 0.10\%$ FSO • 0.875" Diameter • Case rated to 900 ft • Lightning suppression • Hytrel jacketed cable • Wet wells, ponds, and tank level measurements • Water treatment 	<ul style="list-style-type: none"> • 1" Flush ceramic diaphragm • 0 to 3 thru 0 to 300 PSI • Corrosion resistant, leak-proof construction • Lift station level monitoring • Water and wastewater level monitoring 	<ul style="list-style-type: none"> • 1.25" PVC housing • 0 to 3 thru 0 to 300 PSI • Corrosion resistant, leak-proof construction • ATEX/IEC Intrinsically Safe • Water and wastewater level monitoring • Other aggressive media 	<ul style="list-style-type: none"> • Low-cost, high reliability • Submersible to 700' WC • 1" diameter • Up to $\pm 0.2\%$ FSO accuracy • All 316L SST construction • Ground water monitoring • Irrigation
Options*	<ul style="list-style-type: none"> • FM/CSA Approval • Temperature Output • Lifetime surge warranty 	<ul style="list-style-type: none"> • Slim 0.69" diameter • Titanium construction • Hytrel or Tefzel® cable • RS242 output to SDI-12 	<ul style="list-style-type: none"> • Additional lengths, Tefzel® or Hytrel cable • PVC or Titanium housing 	<ul style="list-style-type: none"> • Additional lengths, Tefzel® or Hytrel cable • SAE-4, flush ceramic, or bullet nose process connection 	<ul style="list-style-type: none"> • Lightning & surge protection • Sludge screen for viscous media • Cable lengths to >3,000 ft • Tefzel® cable
Ranges	0-1 thru 0-500 PSI	0-20" WC thru 300 PSI	0-3 PSI thru 300 PSI	0-3 PSI thru 300 PSI	0-12 ft WC thru 0-72 ft WC
Accuracy	$\pm 0.5\%$, $\pm 0.20\%$	$\pm 0.5\%$, $\pm 0.2\%$, $\pm 0.1\%$	$\pm 0.5\%$, $\pm 0.20\%$	$\pm 0.5\%$, $\pm 0.20\%$	$\pm 0.5\%$, $\pm 0.20\%$
Output	4-20 mA or 0-5 Vdc	4-20 mA, SDI-12	4-20 mA	4-20 mA	4-20 mA or 0-5 Vdc
Process Port	3" SST Diaphragm	PVC bullet nose	Flush Ceramic	Flush Ceramic	PVC Bullet Nose 7/16-20 port (M)
Electrical	Hytrel jacketed, 4-conductor, vent tube & hydrophobic filter	Hytrel jacketed, 4-conductor, vent tube & hydrophobic filter	Hytrel jacketed, 4-conductor, vent tube & hydrophobic filter	Hytrel cable, 6-conductor w/breather tube	½" NPT (M) conduit w/8' Hytrel jacketed cable
Materials	316 SST	316L SST	316L SST Wetted: Ceramic Al203	Poly vinyl chloride Wetted: Ceramic Al203	316 SST

					
	BR1002/1003	BR1003-IA	BR240/340	BR311	*Detachable Cable
Features/Applications	<ul style="list-style-type: none"> • Low-cost, high reliability • 0.870" diameter design • Compact rugged design • 4 oz. weight • Industrial OEM • Pneumatic/hydraulic controls • Pump controls 	<ul style="list-style-type: none"> • G ½" flush diaphragm pressure port • 0.25% FSO accuracy • IP65 rated housing • Compatible with wide range of liquids • Boiler Controls • Pneumatic/hydraulic controls • Pump controls 	<ul style="list-style-type: none"> • Compact design for easy installation • All stainless steel welded construction • ATEX & IEC approvals • Improved accuracy and thermally compensated • Pneumatic/hydraulic controls • Pump controls 	<ul style="list-style-type: none"> • Available ranges from 0-30" WC thru 0-15K PSI • Rugged, welded, stainless steel • Economically priced • Pneumatic/hydraulic controls • Irrigation pumps pressure • Compression controls 	<ul style="list-style-type: none"> • Optional detachable cable available on all submersibles • Designed specifically for submersible level applications including the Blue Ribbon Birdcage • Convenient and efficient • Easily replace damaged transmitter or cable • Cost efficient • Available for any standard 4-20 mA Blue Ribbon pressure or level transmitter
Options	<ul style="list-style-type: none"> • Comprehensive selection of process and electrical connections 	<ul style="list-style-type: none"> • 4-20 mA, 0 to 5 Vdc • Flanged process mounting • Select Electrical connections 	<ul style="list-style-type: none"> • Comprehensive selection of process and electrical connections • Shunt calibration • Hazardous location approvals 	<ul style="list-style-type: none"> • Zero and span adjustments • Alternate connectors and pressure ports • Intrinsically Safe and Explosion Proof approvals 	
Ranges	0-15 thru 0-10K PSI G, SG, V, A	0-2 to 0-3000 PSI G, SG, V, A	0 to 1 thru 0 to 30K PSI (PSIG, PSIS, PSIA, PSIV)	0 to 30" WC thru 0 to 15K PSI (PSIG, PSIS, PSIA, PSIV)	
Accuracy	$\pm 0.5\%$ or $\pm 0.25\%$	$\pm 0.25\%$ FSO	$\pm 0.25\%$ FSO, $\pm 0.15\%$	$\pm 0.5\%$, $\pm 0.2\%$, $\pm 0.1\%$ FSO	
Output	4-20 mA or 0-5 Vdc	4-20 mA or 0-5 Vdc	4-20 mA and 0-5 Vdc	mV/V, 4-20 mA, 0-5 Vdc	
Process Port	1/4" NPT (M)	G ½ standard	¼" NPT (M), options available	¼" NPT (F), options available	
Electrical	DIN 43650 Form C	DIN 43650 w/mate	½" NPT M conduit w/6' multi-conductor cable	36" long PVC jacketed cable, 4-conductor	
Materials	17-4 PH & 316 SST	316 & 17-4 SST	Housing: 316 SST Wetted: 316L SST, 17-4 PH SST	316 SST	



BLUE RIBBON CORP.

2770 Long Road
Grand Island, NY 14072

Return Service Requested

DISTRIBUTED BY: